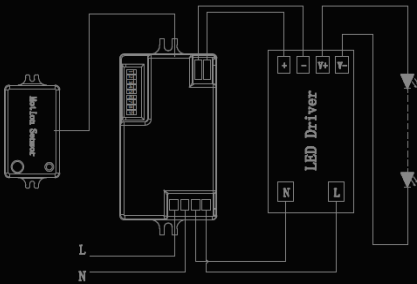


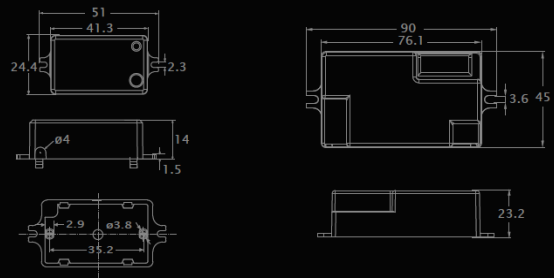
CENTER BASKET TROFFER/FLAT PANEL MOTION SENSOR HD407V-CR:



Wiring diagram



Dimensions

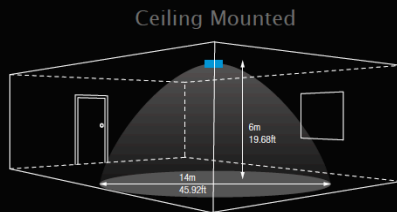


Unit:mm

Technical data

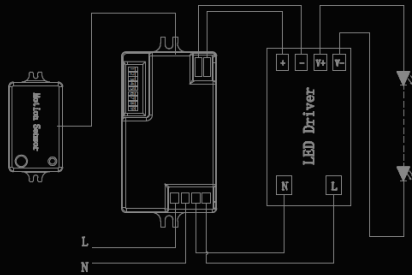
Operating voltage	120~277 VAC 50/60Hz
Switching capacity	Max.3.0A@120Vac, Max.2.0A@277Vac
Stand-by power	<1W
Detection area	50%/100%
Hold time	5s/30s/1min/10min
Stand-by period	0s/30s/20min/+∞
Stand-by dimming level	10%/20%/30%/50%
Daylight threshold	2Lux/10Lux/50Lux/Disable
Microwave frequency	5.8GHz±75MHz
Mounting height	Max.6m/19.68ft
Detection range	Max.ø14m/45.92ft
Operating temperature	-30°C~+70°C
IP rating	IP20

Detection Patterns

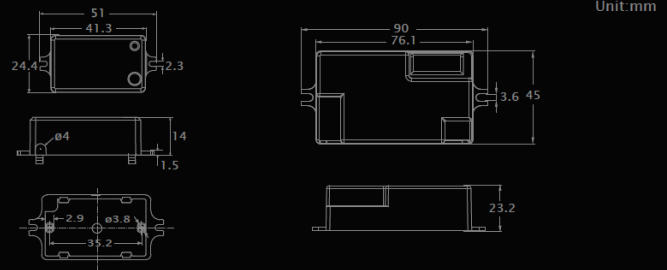


CENTER BASKET TROFFER/FLAT PANEL MOTION SENSOR HD407V-CR:

Wiring diagram



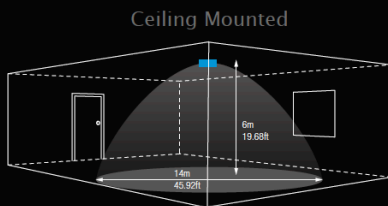
Dimensions



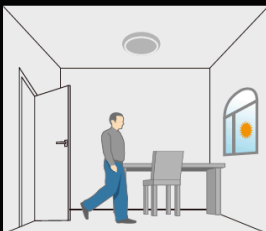
Technical data

Operating voltage	120~277 VAC 50/60Hz
Switching capacity	Max.3.0A@120Vac; Max.2.0A@277Vac
Stand-by power	<1W
Detection area	50%/100%
Hold time	5s/30s/1min/10min
Stand-by period	0s/30s/20min/+∞
Stand-by dimming level	10%/20%/30%/50%
Daylight threshold	2Lux/10Lux/50Lux/Disable
Microwave frequency	5.8GHz±75MHz
Mounting height	Max.6m/19.68ft
Detection range	Max.∅14m/45.92ft
Operating temperature	-30°C~+70°C
IP rating	IP20

Detection Patterns



Application Function Demo – Dimmable control/Corridor function



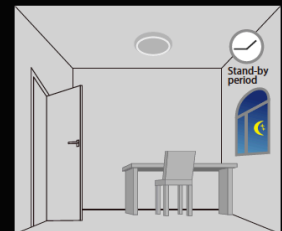
With sufficient daylight, even when motion detected, light remains OFF.



With insufficient daylight, when motion detected, light ON.



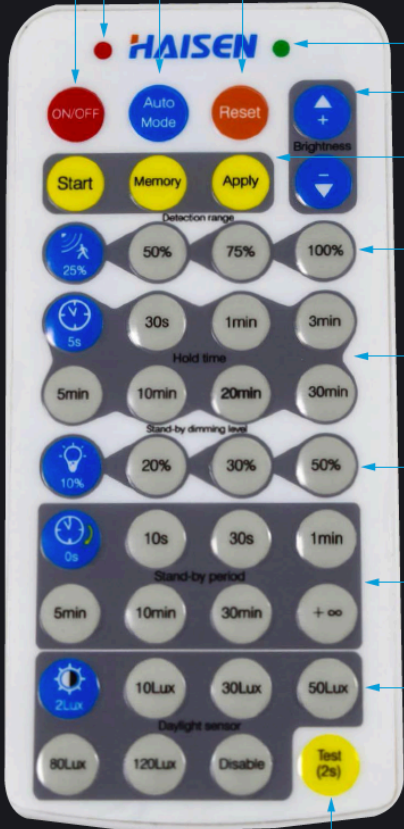
After last detection, the light will be dimmed down to the stand-by dimming level (10%,20%,30% or 50%) after holdtime.



After the stand-by period, light OFF.

Handhold Remote set up:

Model: HD03R



ON/OFF
Press the "On/off" button, the light keeps permanently on or off.
Press "Auto Mode", "Reset" or "Apply" buttons to quit from this mode.
Flick after press any button

Auto Mode
Press "Auto Mode" button, the sensor starts to work and all settings remain the same before the light gets switched on/off.

Reset
1. Press "Reset" button, change brightness to max level.
2. Press "Reset" button, products with DIP switch will be controlled by DIP switches; otherwise all the setting will be just initial, that is 100% detection range, hold time 5S, no stand-by time and daylight threshold disabled.
Flick only after press "Apply" button

+/-
1. To adjust brightness 10-100% in on/off mode.
2. To adjust highest brightness 60-100% in sensor mode.

Start
Press "Start" to customize scene, users can change detection range, daylight threshold, holdtime, standby dimming level and standby period.

Memory
1. Press "Memory" to save all the settings.
2. The settings remained as the last time if not get resetted values.

Apply
1. Press "Apply" to deliver the saved setting.
2. Press "Apply" without "memory" will make all the setting one-time operation.
3. Settings should be done within 30S, otherwise it exits memory mode.

Detection area
Press to define detection area 100%/75%/50%/25%.

Hold time
Press to define holdtime 5s/30s/1min/3min /5min/10min/20min/30min

Stand-by dimming level
Press to define stand-by dimming level 10%/20%/30%/50%.

Stand-by period
Press to define stand-by period 0s/10s/30s/1min/5min/10min/30min/+∞
Note: "0s" means no standby period; "+∞" means unlimited standby period.

Daylight threshold
Press to define daylight level 2Lux /10Lux /30Lux/50Lux/80Lux/120Lux/Disable.
Note: Disable means light will be turned on once sensor detects movement, regardless of the ambient lux.

2s Test
The button "Test (2s)" is for testing purpose after commissioning. Pressing this button, the sensor goes to test mode (hold time is only 2s)

Attention

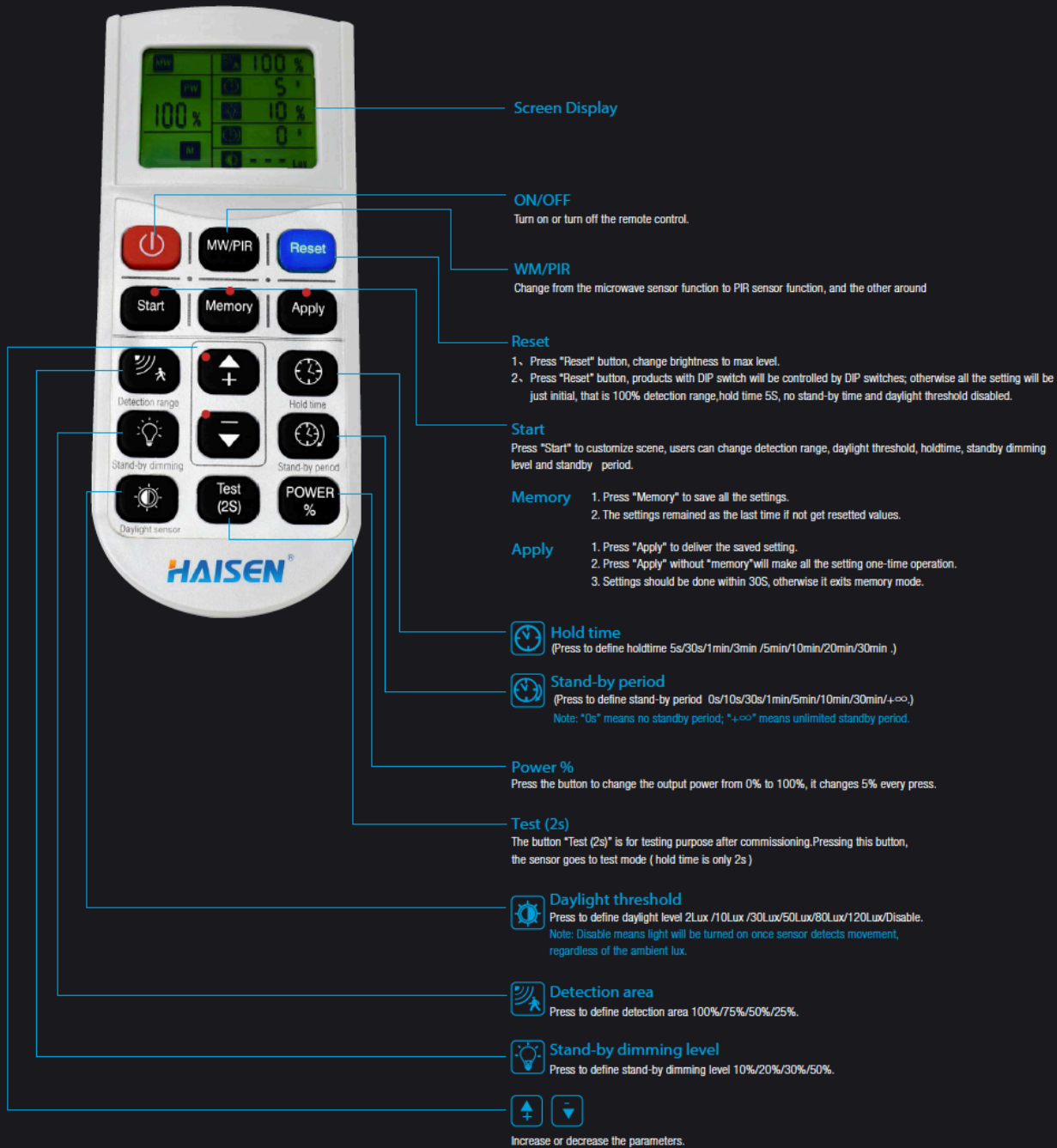
1. Light turns on when sensor is wired correctly.
2. When using on/off button, the rest setting buttons don't work.
3. Press "Auto Mode", "Apply" or "Reset" button before setting detection range, holdtime, daylight threshold, standby dimming level and standby period, sensor flickers after receiving signals.
4. Every change will be automatically saved.
5. "Start" and "Memory" operation doesn't affect sensor working, "Apply" does.

6. How to use "Memory" mode:

- ① Press "Start", then set parameters in each of the five zones (Detection area, Hold time, Stand-by dimming level, Stand-by period, Daylight sensor), then press "Memory" to memorize the settings; press "Apply" to control required sensors.
- ② Press "Apply" without "Memory" makes all settings just for one time.
- ③ All Settings should be done within 30S, otherwise it has to start over.

Screen Display set up:

Model: HD05R



Screen Display

ON/OFF
Turn on or turn off the remote control.

MW/PIR
Change from the microwave sensor function to PIR sensor function, and the other around

Reset
1、 Press "Reset" button, change brightness to max level.
2、 Press "Reset" button, products with DIP switch will be controlled by DIP switches; otherwise all the setting will be just initial, that is 100% detection range, hold time 5S, no stand-by time and daylight threshold disabled.

Start
Press "Start" to customize scene, users can change detection range, daylight threshold, holdtime, standby dimming level and standby period.

Memory
1. Press "Memory" to save all the settings.
2. The settings remained as the last time if not get resetted values.

Apply
1. Press "Apply" to deliver the saved setting.
2. Press "Apply" without "memory" will make all the setting one-time operation.
3. Settings should be done within 30S, otherwise it exits memory mode.

Hold time
(Press to define holdtime 5s/30s/1min/3min /5min/10min/20min/30min .)

Stand-by period
(Press to define stand-by period 0s/10s/30s/1min/5min/10min/30min/+∞)
Note: "0s" means no standby period; "+∞" means unlimited standby period.

Power %
Press the button to change the output power from 0% to 100%, it changes 5% every press.

Test (2s)
The button "Test (2s)" is for testing purpose after commissioning. Pressing this button, the sensor goes to test mode (hold time is only 2s)

Daylight threshold
Press to define daylight level 2Lux /10Lux /30Lux/50Lux/80Lux/120Lux/Disable.
Note: Disable means light will be turned on once sensor detects movement, regardless of the ambient lux.

Detection area
Press to define detection area 100%/75%/50%/25%.

Stand-by dimming level
Press to define stand-by dimming level 10%/20%/30%/50%.

↑ ↓
Increase or decrease the parameters.